

## 铝压铸壳体加工专家



西安万威机械制造有限公司  
Xi'an Winway Machinery Co.,LTD.

地址: 陕西省西安市高新区丈八五路2号现代企业中心  
东区工业厂房1栋1层、3栋1层

邮政编码: 710075

电话: +86-29-87814108

传真: +86-29-87814667

官网: [www.xawinway.com](http://www.xawinway.com)

Add: Building1, Building3, East Industrial plant of the Modern  
Enterprise Center, No 2, ZhangBaWu Road, High-tech  
Development Zone, Xi'an, Shaanxi Province.

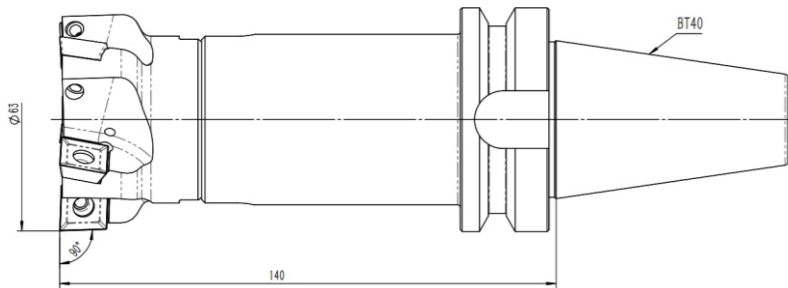
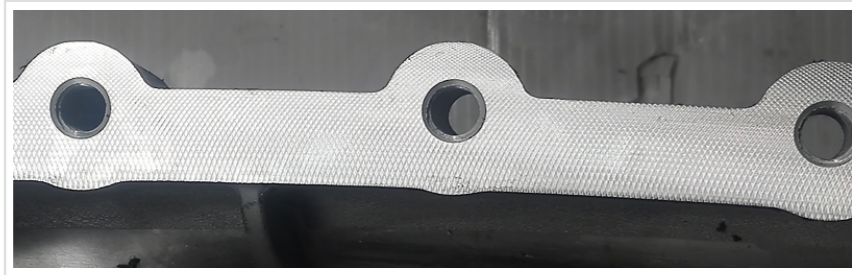
Post code: 710075

Tel: +86-29-87814108

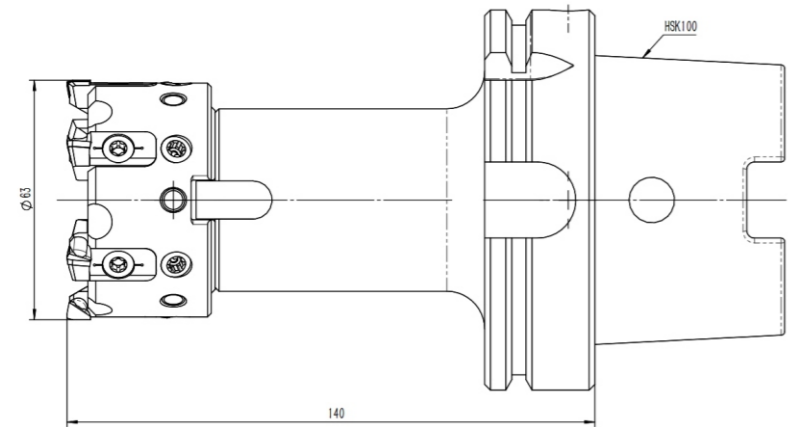
Fax: +86-29-87814667

Official website: [www.xawinway.com](http://www.xawinway.com)

### 铝压铸壳体面加工

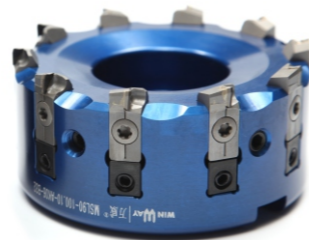


粗铣面  
铣刀盘：MF90-63.6-SW1304-A22  
刀片：SXGM1304PDEF-AL MN055

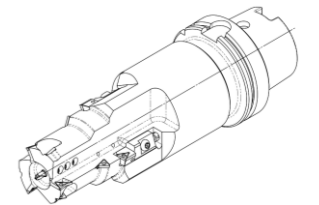
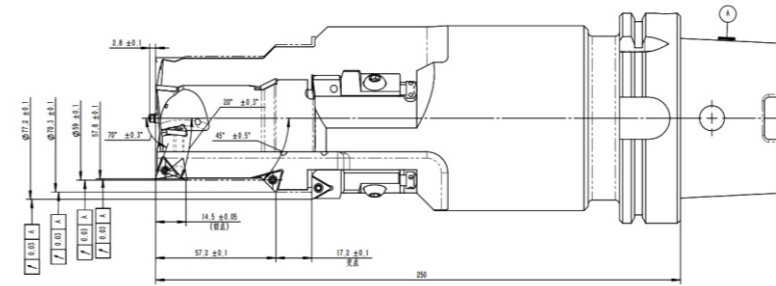
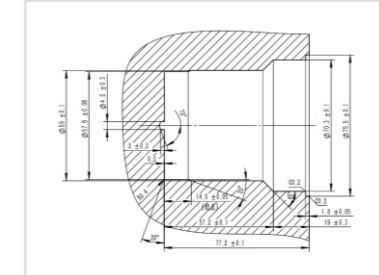


精铣面  
精铣刀盘：KSCM63R06CAB22  
PCD刀夹：WWDJ-PCD-RZ

万威蓝色火焰系列平面铣刀，  
采用不同的刀夹形式组合，  
可涵盖粗加工到镜面加工及网纹加工，  
性能**瞭咋咧**！



### 铝压铸壳体孔加工



万威复合镗刀、铰刀等系列产品，满足市场多样化需求，能实现高复合、高效率、高精度多样化的市场需求；在轴承孔等6级精度要求的孔加工方面**独孤求败**。

